

# PRODUCT CATALOGUE



**JEMA**

ENGINEERING ➔ GRAIN HANDLING ➔ TOGETHER

# JEMA AGROSYSTEM SILO



## Intelligent transportation of granulates to silos.

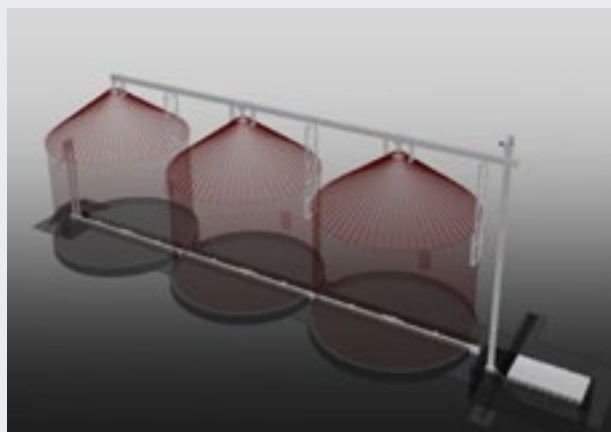
JEMA AgroSystem transports grain (and other granulates) from a chosen position to your desired silo with a few selections on a touch screen with graphic interface and simple user operation.

JEMA AgroSystem handles not only grain but all types of granulates, e.g. seeds, soya, fodder, maize, chips etc. JEMA AgroSystem's intelligence comes from a Beckhoff PLC programmed to provide simple user operation on a 7" colour touch screen. It shows graphic symbols and only a limited amount of text in the selected local language, which makes the system very user-friendly.

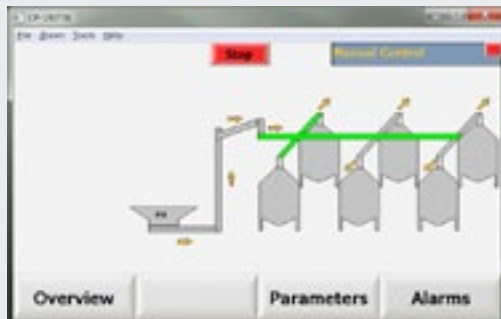
Transport routes are easily created with a built-in 3-step guide. The screen shows the status of the installation at all times, e.g. "Started". If there are any errors, they are listed in an alarm log where it is possible to reset them.

JEMA AgroSystem can manage inbound loads from the inlet to the silo and outbound loads from the silo to a truck at the same time.

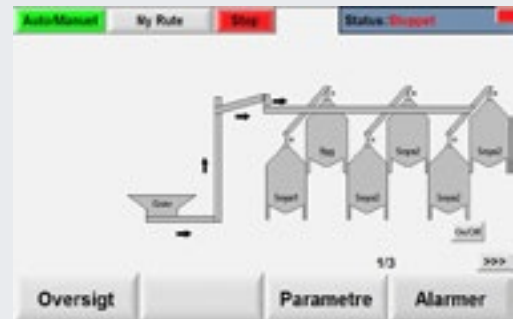
The operating panel of the JEMA AgroSystem installation is password-protected. If you need assistance with the JEMA AgroSystem, the system connects for remote assistance via a GSM module on a secure VPN connection. This allows a technician to guide you and take immediate corrective action without having to drive to the site.



# JEMA AGROSYSTEM SILO



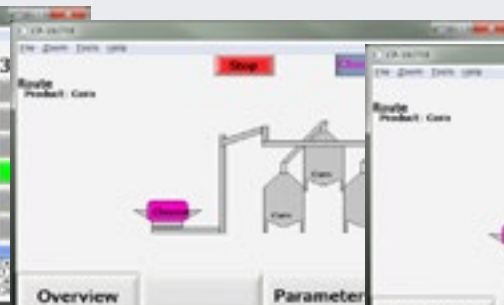
When the system is in manual mode, it is possible to start and stop motors and set their speed (if the motors are operated by frequency converters) manually. The screen shows graphically which of the motors are running and which of them have stopped.



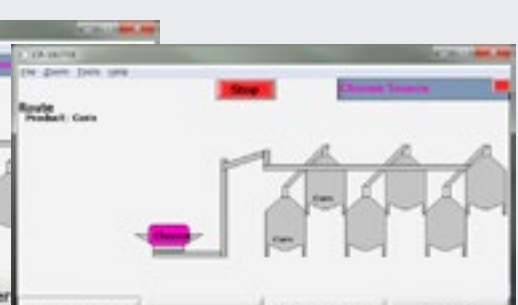
Products and routes are defined in auto mode.



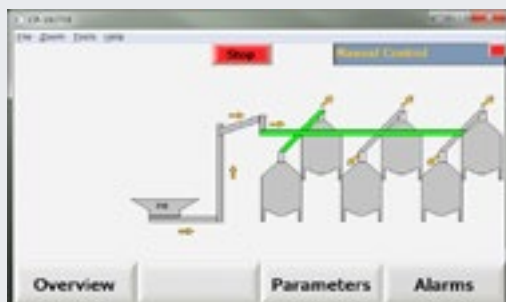
1. The setup starts by defining the products in the individual silos and their transportation speed.



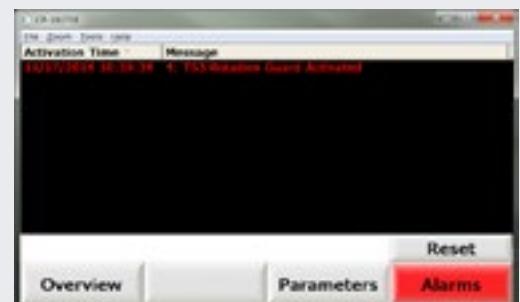
2. Then you decide from where the products are to be collected.



3. Once the destination for each of the products has been selected, the setup is ready ...



4. ... and the transport can begin.



5. Errors are acknowledged in the alarm log.





# JEMA AGROSYSTEM FLAT FLOOR STORAGE SYSTEM



## Intelligent transportation of granulates to flat floor storage systems.

JEMA AgroSystem allows you to transport grain (and other granulates) to a flat floor storage system divided into different compartments and thereby store it at different layers and heights to ensure optimal storage and drying.

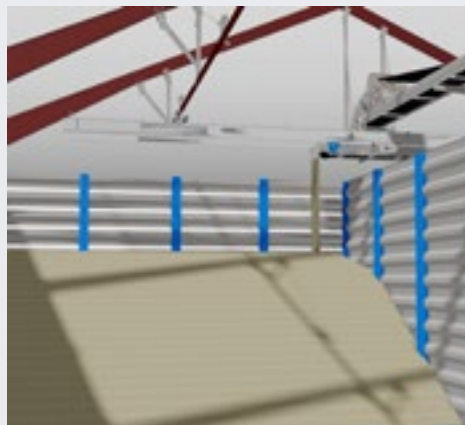
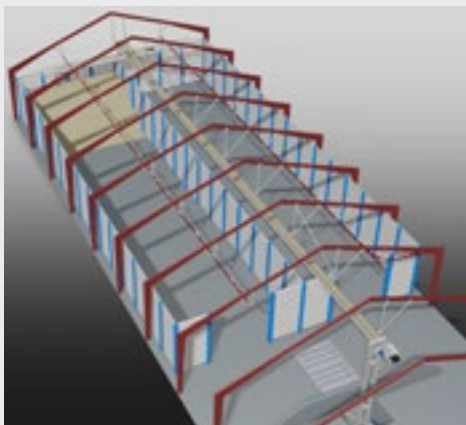
JEMA AgroSystem is used to distribute different types of grain in a building.

JEMA AgroSystem allows you to easily distribute grain in a flat floor storage system divided into different compartments. In other words, your flat floor storage system can be converted into a number of cells with individual storage heights.

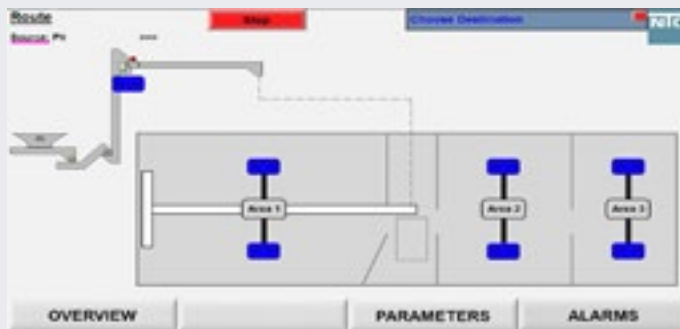
Grain ready for storage is transported to a cell that is filled until the layer reaches the maximum set height. On the other hand, grain for drying is transported to a compartment equipped with air ducts and stored at a depth suitable for drying. One or more additional layers are added to this compartment on the following day, and new layers are added until the desired storage height is reached.

JEMA AgroSystem distributes the grain in each new layer to the exact height that has been input in the operating panel. Once one layer is distributed throughout the cell, the system adds another layer. The system stops when sensors notice that there is no more grain in the intake.

The built-in real-time layer height measurement provides JEMA AgroSystem with a full overview of quantities in the flat floor storage system and gives you a clear indication of your storage costs.



# JEMA AGROSYSTEM FLAT FLOOR STORAGE SYSTEM



JEMA AgroSystem handles not only grain but all types of granulates, e.g. seeds, soya, fodder, maize, chips etc. JEMA AgroSystem's intelligence comes from a Beckhoff PLC programmed to provide simple user operation on a 15.6" colour touch screen. It shows graphic symbols and a limited amount of text in the selected local language, which makes the system very user-friendly.

When the system is in manual mode, it is possible to start and stop motors and set their speed (if the motors are operated by frequency converters) manually. It is possible to view graphically on the screen which of the motors are running and which of them have stopped. For manual control of the cross conveyor, we recommend the option with an 8-function remote control.

Transport routes are easily created in automatic mode via a built-in 2-step guide where you define intake and destination compartments. Parameter setup is used for defining the maximum height of the flat floor storage layer, the filling speed, and the thickness of each layer of grain. The flat floor storage system is divided into a number of cells. The screen shows the status of the installation at all times, e.g. "Started". If there are any errors, they are listed in an alarm log where it is possible to reset them.

The operating panel of the AgroSystem installation is password-protected, and if you need assistance with JEMA AgroSystem, the system connects for remote assistance via a GSM module on a secure VPN connection. This allows a technician to guide you and take immediate corrective action without having to drive to the site.



# TIPPING HOPPER



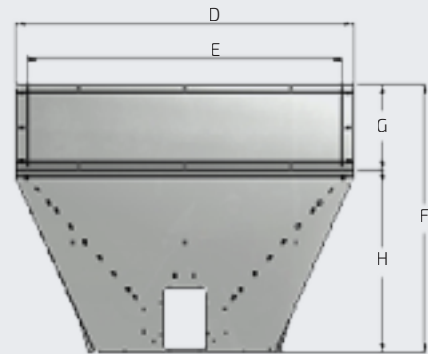
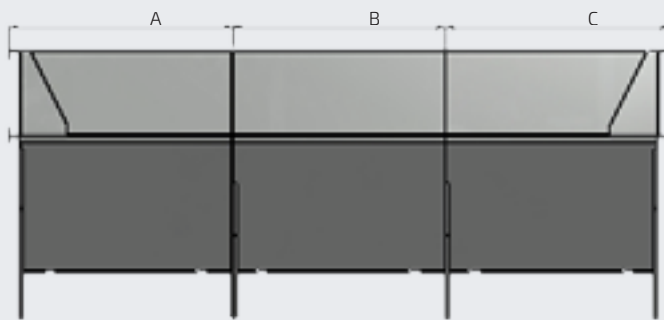
The JEMA AGRO tipping hopper is designed for the purpose of giving optimal conditions for maintenance, and in order to avoid ground water in the grain.

With a JEMA tipping hopper placed on the ground, or placed in a concrete pit, you can tip grain in to the tipping hopper and transport it automatically to the transport system. The tipping hopper can be fitted on JEMA intake conveyors and JEMA inlet augers for chain elevator.

- Easy maintenance
- Easy fitting
- Easy and economical transport, as the tipping hopper is disassembled on pallets
- No horizontal surfaces where old material can build up
- Modularly built in sections with 1,5 mm galvanized steel
- Fits the JEMA AGRO T44, T45, T49, T57 intake conveyors and T20/40 intake augers.
- Tarpaulin and rolling rods
- Side extensions for larger content



# TIPPING HOPPER



## Dimensions:

A	B	C	D	E	F	G	H
1055	1002	1055	1590	1486	1258	400	858

## Technical specifications:

Content of the tipping hopper without extension plates									
Length	2 m	3 m	4 m	5 m	6 m	7 m	8 m	9 m	10 m
Ø135 / T44	1,1 m³	1,6 m³	2,1 m³	2,6 m³	3,1 m³	3,6 m³	4,1 m³	4,6 m³	5,1 m³
T45	1,2 m³	1,7 m³	2,2 m³	2,7 m³	3,2 m³	3,7 m³	4,2 m³	4,7 m³	5,2 m³
T49 / T57	1,3 m³	1,9 m³	2,5 m³	3,1 m³	3,7 m³	4,3 m³	4,9 m³	5,5 m³	6,1 m³

Content of the tipping hopper with extension plates									
Length	2 m	3 m	4 m	5 m	6 m	7 m	8 m	9 m	10 m
Ø135 / T44	2,3 m³	3,4 m³	4,5 m³	5,6 m³	6,7 m³	7,8 m³	8,9 m³	10,0 m³	11,1 m³
T45	2,4 m³	3,5 m³	4,6 m³	5,7 m³	6,8 m³	7,9 m³	9,0 m³	10,1 m³	11,2 m³
T49 / T57	2,5 m³	3,6 m³	4,7 m³	5,8 m³	6,9 m³	8,0 m³	9,1 m³	10,2 m³	11,3 m³



# BELT CONVEYOR

## TYPE BC400



Belt conveyor type BC400 is made up of standard elements which, when correctly combined, can easily be fitted into any conveying installation.

The JEMA AGRO belt conveyor is manufactured in galvanized steel and designed in a light and easy-to-assemble modular system. Type BC400 is designed with guide rollers. The belt conveyor is quiet, and has low power consumption in relation to its capacity.

The belt conveyor can transport materials in both directions. There is also the possibility for transport at an upward angle of up to 30° using carriers, however, with reduced capacity. The belt conveyor is designed for industrial purpose, and it is suitable for gentle transport of most materials.

#### Standard equipment:

- Directly mounted gear motor
- Torque arm for shock absorption
- EP-belt
- Support rollers each 0,5 m
- Returning rollers each 2,0 m
- Shielding for drive station/tightening section
- Tightening in both drive station and tightening section

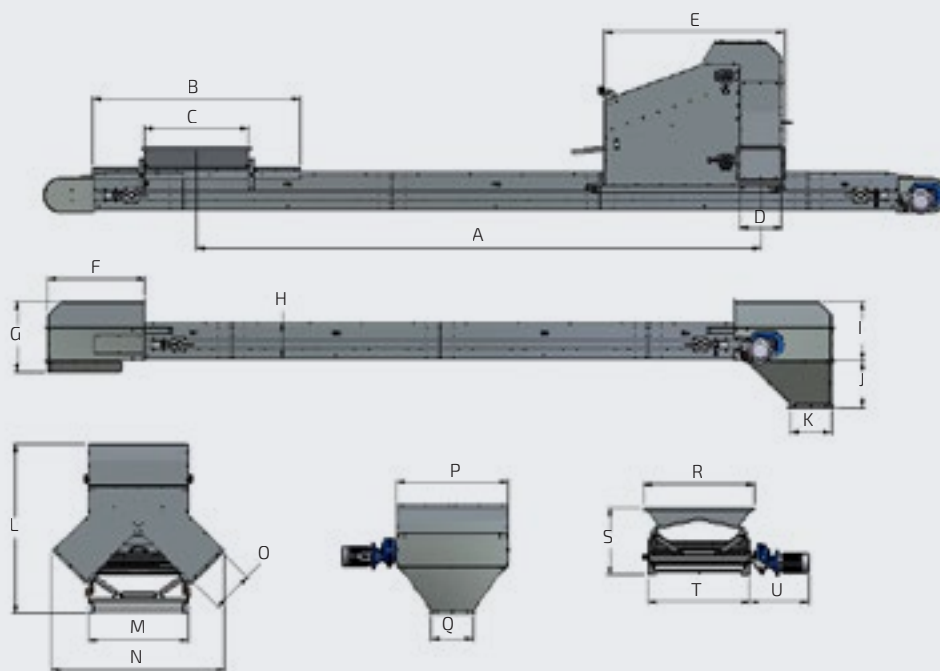
#### Accessories:

- Inlet hoppers
- Outlet skirts/outlet hoppers
- Cover for top/bottom
- Speed control monitor
- Moveable tripper carriage
- Drive winch for moving the tripper carriage
- Belt with vulcanised v-carriers
- Belt guide rollers
- Belt scraper external
- Belt scraper internal
- Side extensions
- Oil resistant belt
- Outlet deviser





# BELT CONVEYOR TYPE BC400



## Dimensions BC400:

	A	B	C	D	E	F	G	H	I	J	K
BC400	Min. 11000	2000	1000	400 x 400	1730	935	680	360	572	450	400 x 400

	L	M	N	O	P	Q	R	S	T	U
BC400	1630	960	1666	400 x 400	1070	400 x 400	1065	645	982	690

## Technical specifications:

	BC400
Capacity based on 750 kg/m <sup>3</sup> (wheat) t/h	300 t/h
Capacity m <sup>3</sup> /h	400 m <sup>3</sup> /h
Rotation speed	150 RPM
Belt speed	2,3 m/s
Drum diameter	Ø300 mm
Belt width	800 mm
Belt type	EP250/2
Plate thickness, drive station/ tightening section	2/3 mm
Plate thickness, extension	2/3 mm



# INTAKE CONVEYOR TYPE C300



Intake conveyor type C300 is made of standard elements which, through combination, can easily be fitted into any conveying installation.

The JEMA AGRO intake conveyor is made of strong galvanised material, which makes it particularly suitable for outdoor applications. The intake conveyor has low power consumption in relation to its capacity.

The intake conveyor C300 is designed for industrial transport of grain, granulates, and other bulk goods. A steel chain fitted with synthetic carriers ensures that all material transport is conducted quietly, safely, and effectively. The capacity can be regulated steplessly. Regarding capacity, the intake conveyor is designed for transporting materials from a JEMA Dry Pit to a JEMA bucket elevator.

#### Standard equipment:

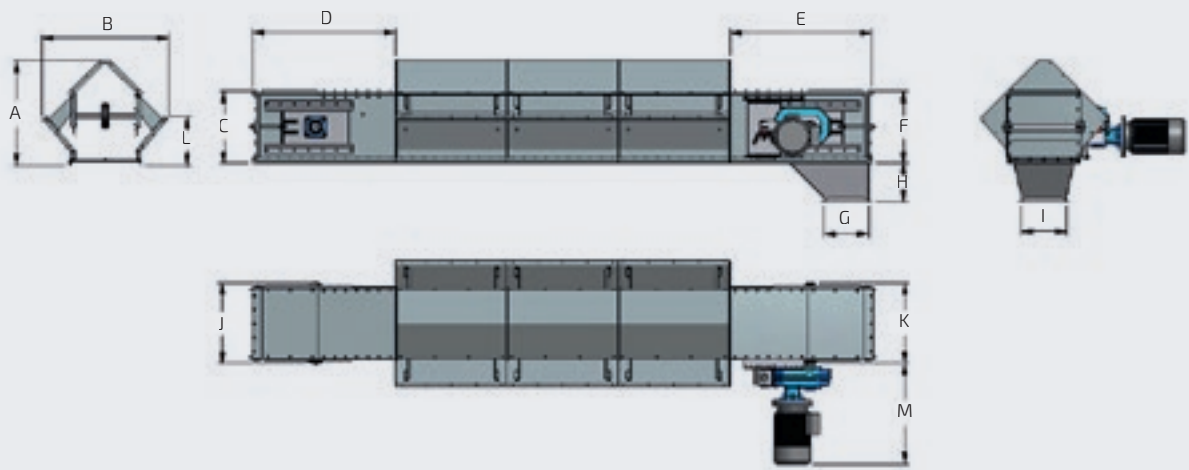
- Directly mounted gear motor
- Torque arm for shock absorption
- Outlet hopper for drive station
- PEHD carriers
- Cleaning hatch in drive station/ tightening section
- Tightening possibilities in both drive station and tightening section
- Inspection cover in drive station / tightening section
- Adjustable plates in the inlet troughs

#### Accessories:

- Adjustable endplate in tightening section for keeping it clean
- Cover for geared motor
- Blockits sensor
- DRY PIT



# INTAKE CONVEYOR TYPE C300



Dimensions C300 Intake conveyor:

	A	B	C	D	E	F	G	H	I
C300	935	1145	650	1290	1290	650	400	345	400

	J	K	L	M 7,5 kW	M 11 kW	M 15 kW
C300	720	720	430	800	830	882

Technical specifications:

	C300
Capacity based on 750 kg/m <sup>3</sup> (wheat) t/h	225 t/h
Capacity m <sup>3</sup> /h	300 m <sup>3</sup> /h
Rotation speed	22 RPM
Chain speed	0,55 m/s
Pitch on chain	125 mm
Tensile strength	118 kN
Carrier, material	PEHD 1000
Sprocket wheel, teeth	12 pcs
Plate thickness, drive station top/side/bottom	2/4/5 mm
Plate thickness, tightening section top/side/bottom	2/4/5 mm
Plate thickness, extension top/side/bottom	2/3/5 mm



# CHAIN CONVEYOR TYPE C300



Chain conveyor type T49/T57 is made of standard elements which, through combination, can easily be fitted into any conveying installation.

The JEMA AGRO chain conveyor is made of strong galvanised material, which makes it particularly suitable for outdoor applications. The chain conveyor C300 is designed for industrial transport of grain, granulates, and other bulk goods. A steel chain fitted with synthetic carriers ensures that all material transport is conducted quietly, safely, and effectively.

The chain conveyor works effectively in both horizontal position and at an upward angle of up to 5° and has low power consumption in relation to its capacity. Regarding capacity, the elevator is designed for transporting materials from a JEMA bucket elevator to storage or to a JEMA belt conveyor.

#### Standard equipment:

- Directly mounted gear motor
- Torque arm for shock absorption
- Outlet hopper for drive station/ tightening section
- PEHD carriers
- Cleaning hatch in drive station/ tightening section
- Tightening possibilities in both drive station and tightening section
- Inspection cover in drive station / tightening section
- Inlet piece

#### Accessories:

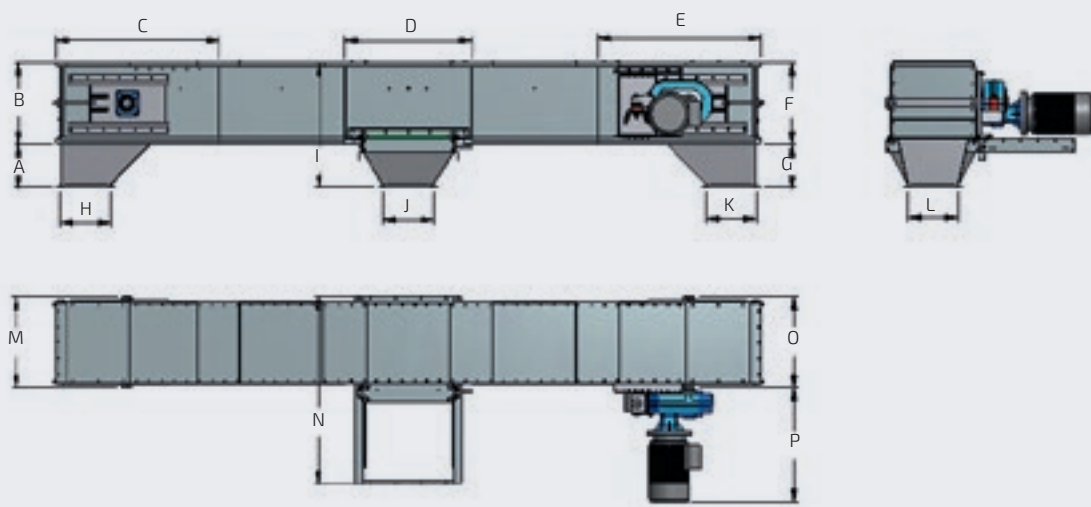
- Intermediate outlet
- Outlet hopper for intermediate outlet
- Adjustable endplate in tightening section for keeping it clean
- Inlet piece for inspection cover
- Cover for geared motor
- Cover for intermediate outlet
- Blockits sensor





# CHAIN CONVEYOR

## TYPE C300



Dimensions C300 Chain conveyor:

	A	B	C	D	E	F	G	H	I
C300	345	650	1290	1000	1290	650	345	400	990

	J	K	L	M	N	O	P 7,5 kW	P 11 kW	P 15 kW
C300	400	400	400	720	1480	720	800	830	882

Technical specifications:

	C300
Capacity based on 750 kg/m <sup>3</sup> (wheat) t/h	225 t/h
Capacity m <sup>3</sup> /h	300 m <sup>3</sup> /h
Rotation speed	22 RMP
Chain speed	0,55 m/s
Pitch on chain	125 mm
Tensile strength	118 kN
Carrier, materials	PEHD 1000
Sprocket wheel, teeth	12 pcs
Plate thickness, drive station top/side/bottom	2/4/5 mm
Plate thickness, tightening section top/side/bottom	2/4/5 mm
Plate thickness, extension top/side/bottom	2/3/5 mm



# DRY PIT

## SUSPENDED MODULAR GRAIN PIT



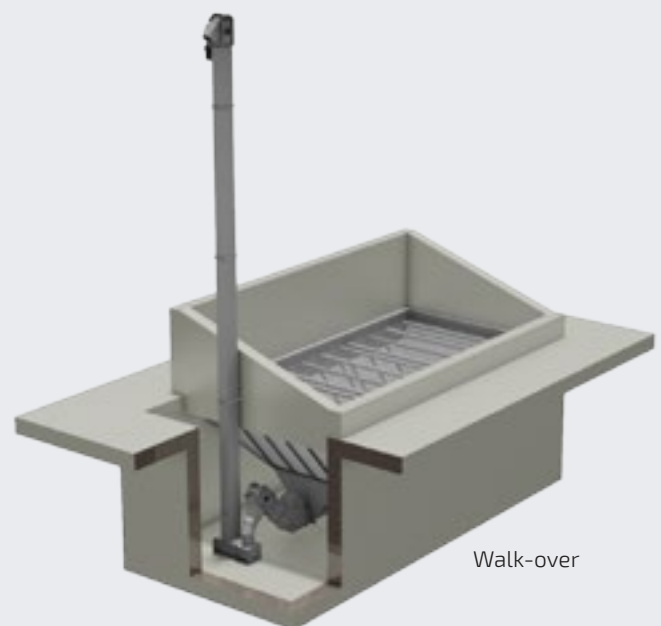
JEMA AGRO DRY PIT is a suspended modular grain pit, which has been developed in order to provide optimal conditions for servicing and avoiding water in the DRY PIT.

The steel pit must hang in a concrete pit with vertical sides, and it is produced in sections of galvanized steel plate, that are to be bolted together. The pit is produced in a walk-over version and in a drive-over version. The DRY PIT has a standard width of 3 m, and is available in 3 depths. It can be delivered in lengths from 3 meters.

- Easy service access
- Simple assembly
- Optimal protection against water
- Is to be fitted suspended in a vertical concrete pit
- Easy and economical transport, as the DRY PIT can be packed on pallets
- No horizontal areas where grain and feedstuff can remain
- Designed in modular sections, made of 3-4 mm galvanized steel plates
- Fits with JEMA AGRO T45, T49 and T57 chain and flight conveyors
- Vehicular grating is modular built in 0,5 x 2,0 m. sections
- The walk-over version is supplied with 100x100x8 mm reinforcement grid



Drive-over



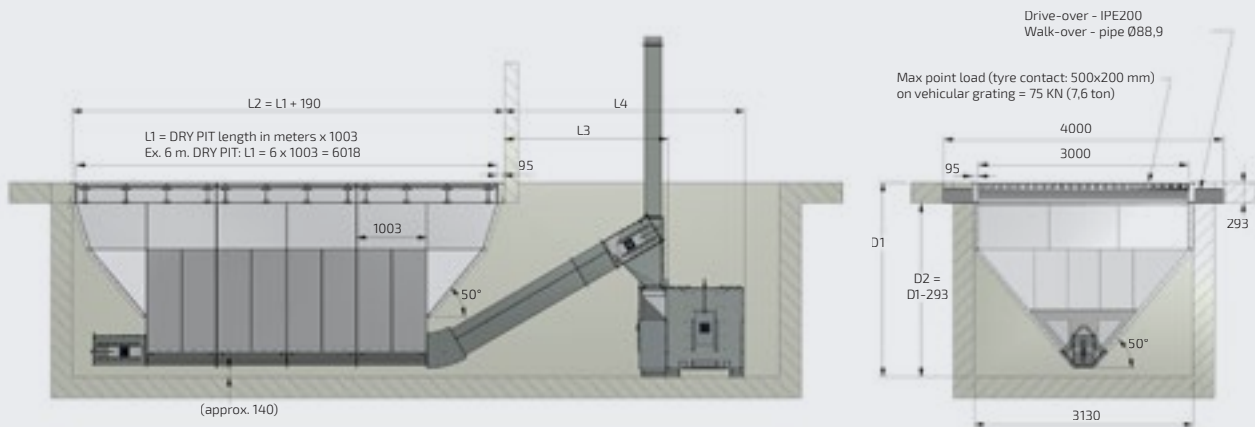
Walk-over

**DRY PIT®**



# DRY PIT

## SUSPENDED MODULAR GRAIN PIT

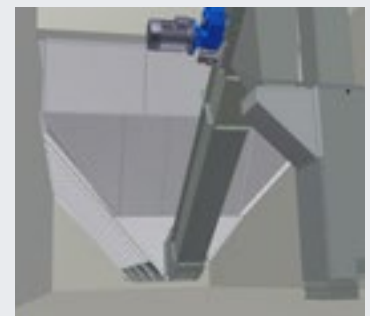
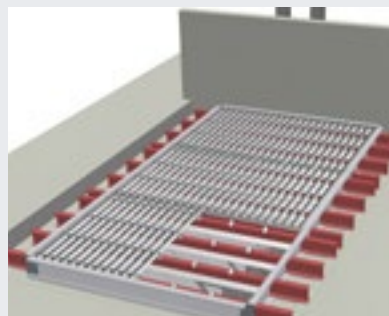


The measurements are the same for walk-over and drive-over version.

### Dimensions / Technical specifications

Grain pit type	Capacities by steel pit Length x width						Depth (D measurement) by conveyor type		
	3x3 m	4x3 m	5x3 m	6x3 m	7x3 m	8x3 m	T57	T49	T45
DRY PIT 1	8,70 m³	12,70 m³	16,70 m³	20,70 m³	24,70 m³	28,70 m³	2,33 m	2,40 m	2,53 m
DRY PIT 2	12,25 m³	17,50 m³	22,75 m³	28,00 m³	33,25 m³	38,50 m³	2,73 m	2,79 m	2,93 m
DRY PIT 3	16,05 m³	22,50 m³	28,95 m³	35,40 m³	41,85 m³	48,30 m³	3,15 m	3,22 m	3,36 m

	L3	L4
DRY PIT - T45 - T40 with flex elevator boot	0,62 m	1,07 m
DRY PIT - T45 - T53	1,24 m	1,92 m
DRY PIT - T49 - T54	2,37 m	3,43 m
DRY PIT - T57 - T55	2,37 m	3,43 m



**DRY PIT®**



# BUCKET ELEVATOR TYPE E11



Bucket elevator type E11 is built in standard elements and can easily be fitted into industrial plants and feed mills.

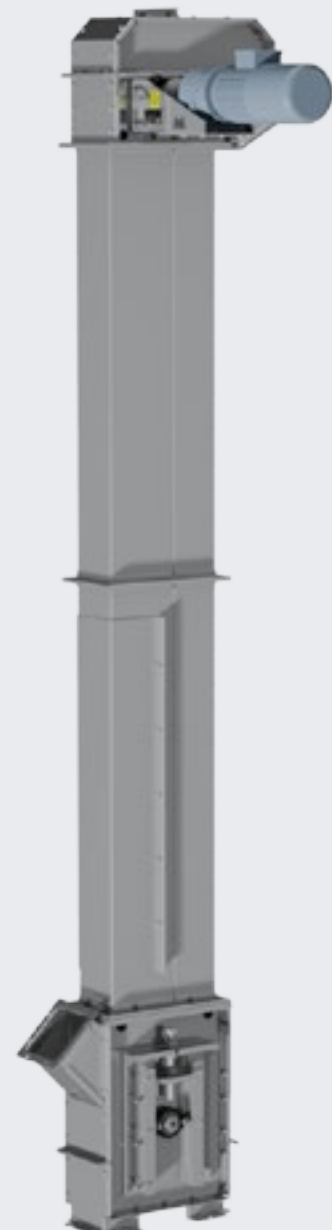
JEMA AGRO bucket elevator is made of galvanized steel and designed for industrial use and thus a very large number of operating hours. The bucket elevator is designed for the transport of bulk goods, meal feed, grains and granules. E11 elevator can optionally be fed in either up going side or down going side. The capacity is the same.

#### Standard equipment:

- Foot geared motor with back stop
- Wear plate in elevator head
- Removable elevator top
- Tightening function in elevator boot
- Cleaning hatch in elevator boot
- Elevator feet
- Inlet piece 45°
- Elevator extension with inspection cover
- Speed control monitor
- Antistatic belt with plastic elevator buckets

#### Accessories:

- Transition pieces and pipe
- Extra inlet
- Inlet shutter
- Inlet 45° for inlet shutter
- Aspiration socket
- Misalignment sensor
- Extra feet
- Inlet for auger
- Service platform, ladder, and resting platform





# BUCKET ELEVATOR TYPE E11



## Dimensions E11 Bucket elevator:

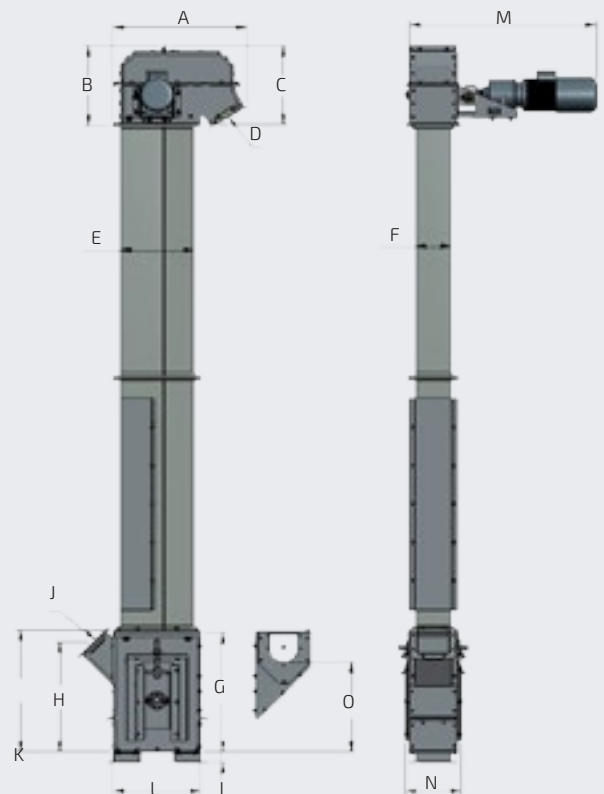
	A	B	C	D	E
E11	510	305	300	125x125	278

	F	G	H	I	J
E11	135	450	420	40	125x125

	K	L	M	N	O
E11	460	335	705	215	340

## Technical specifications:

	E11
Capacity based on 750 kg/m <sup>3</sup> (wheat) t/h	5,25 t/h
Capacity m <sup>3</sup> /h	7 m <sup>3</sup> /h
Rotation speed	415 RPM
Belt speed	2,17 m/s
Drum diameter	Ø100 mm
Bucket/m. belt	10 pcs
Bucket volume, horizontal/max	0,06/0,16 Liters
Material thickness, buckets	1,0 mm
Belt width	100 mm
Belt type	EP400/3
Plate thickness, head	2/3 mm
Plate thickness, boot	2/3 mm
Plate thickness, extension	1,5 mm
Max height	10 m



# BUCKET ELEVATOR TYPE E300



The Bucket elevator type E300 is made of standard elements which, through combination, can easily be fitted into any conveying installation.

The JEMA AGRO bucket elevator is made of galvanised steel, which makes it particularly suitable for outdoor applications. It works effectively and has low power consumption in relation to its capacity. We have designed the machine to be stable in tall versions and to be capable of running continuously for many hours. The bucket elevator is designed for industrial transport of grain, granulates, and other bulk goods. Regarding capacity, the elevator is designed for lifting materials from a JEMA intake conveyor to a JEMA chain conveyor. The upward and downward side of the bucket elevator can be fed with the same capacity.

#### Standard equipment:

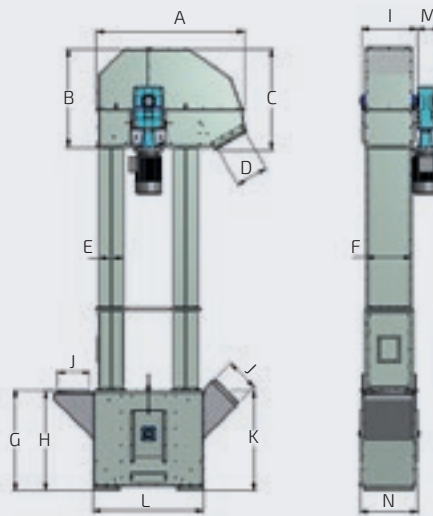
- Directly mounted gear motor
- Torque arm for shock absorption
- Wear plate in elevator head
- Removable elevator top
- Self cleaning drive/ tightening drum
- Tightening function in elevator boot
- Cleaning hatch in elevator boot
- Elevator feet
- Inlet piece 90°
- Elevator extension with inspection cover
- Back stop
- Speed control monitor
- Antistatic belt with steel bucket

#### Accessories:

- Cover for geared motor
- Inlet piece 45° and 3-way inlet
- 2-way switch 45°/90°, transition pieces and pipe
- Inlet shutter
- Aspiration socket
- Misalignment sensor
- Explosion outlet
- Oil resistant belt
- Extra feet
- Service platform, ladder, and resting platform



# BUCKET ELEVATOR TYPE E300



Dimensions E300 Bucket elevator:

	A	B	C	D	E	F	G	H	I	J
E300	1820	1200	1250	400x400	300	558	1235	1230	675	Ø400

	K	L	M 7,5 kW	M 11 kW	M 15 kW	M 18,5 kW	M 22 kW	M 30 kW	N
E300	1250	1350	300	300	300	300	350	350	705

Technical specifications:

	E300
Capacity based on 750 kg/m <sup>3</sup> (wheat) t/h	225 t/h
Capacity m <sup>3</sup> /h	300 m <sup>3</sup> /h
Rotation speed	112 RPM
Belt speed	3,75 m/s
Drum diameter	Ø640
Bucket with belt	6 pcs
Bucket volume, horizontal/max	5,86/7,6 liters
Material thickness, buckets	2,5 mm
Belt width	400 mm
Belt type/standard	EP630/5
Plate thickness, head	4/3 mm
Plate thickness, boot	4/3 mm
Plate thickness, extension	2 mm



# CHAIN ELEVATOR

## TYPE T20 / T40



Chain elevator type T20/T40 is made up of standard elements which, when correctly combined, can easily be fitted into any conveying installation.

The JEMA AGRO chain elevator is made in galvanised material, which makes it particularly suitable for outdoor applications. It is characterised by large capacity despite its small external dimensions and ensures effective utilisation of the overall height since the outlet is positioned very high. The T20/T40 chain elevator is designed for transportation of grain, granulates, and other bulk goods. A quality roller chain fitted with rubber carriers ensures that all material transport is conducted quietly, safely, and effectively. The chain elevator can combine vertical and horizontal transport by using side augers in troughs or a 45°, 55°, or 90° bend. As regards capacity, the elevator is designed for lifting materials from a JEMA Dry Pit to storage or to a JEMA chain conveyor/belt conveyor.

### Standard equipment:

- Directly mounted gear motor
- Torque arm for shock absorption
- Outlet hopper 45°
- Rubber carriers
- Extension 2,5 m with inspection cover
- Elevator boot
- Trough under elevator
- Impellers
- Drive station with tensioner

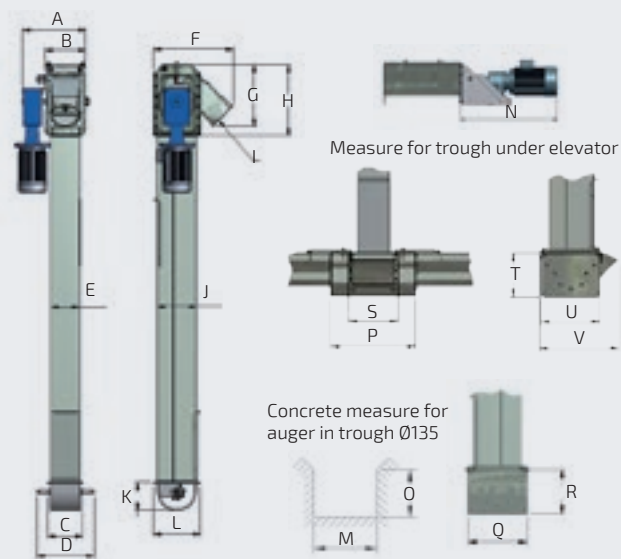
### Accessories:

- Motor with v-belt pulley
- Cover for geared motor
- Outlet hopper 90°
- Auger in trough
- Elevator boot, closed
- Flex elevator boot
- Inlet for flex elevator boot
- Extension with 45° inlet
- Extension with tilting inlet
- Inspection cover with 45° inlet
- Side inlet for flex elevator boot, 45t/h from one side
- Separate drive for auger
- Hopper





# CHAIN ELEVATOR TYPE T20 / T40



## Dimensions T20/T40:

	A	B	C	D	E	F	G	H	I	J	K
T20	378	215	175	335	135	530	430	500	OK160	278	215
T40	457	277	240	400	200	550	480	500	SK200	278	215

	L	M	N	O	P	Q	R	S	T	U	V
T20	320	400	760	300	520	365	265	300	265	365	500
T40	320	400	760	300	520	365	265	300	265	365	500

## Technical specifications:

	T20	T40
Capacity based on 750 kg/m <sup>3</sup> (wheat) t/h	25 t/h	45 t/h
Capacity m <sup>3</sup> /h	33 m <sup>3</sup> /h	60 m <sup>3</sup> /h
Rotation speed	280 RPM	280 RPM
Chain speed	1,71 m/s	1,71 m/s
Pitch on chain	41,4 mm	41,4 mm
Tensile strength (Dynamic)	min. 17,8 kN	min. 17,8 kN
Carrier, material	Rubber	Rubber
Plate thickness, drive station	3 mm	3 mm
Plate thickness, extension	1,5 mm	1,5 mm
Plate thickness, auger in trough	1,5 mm	1,5 mm
Plate thickness, elevator boot	3 mm	3 mm



# CHAIN ELEVATOR WITH BEND

## TYPE T20 / T40



Chain elevator type T20/T40 is made up of standard elements which, when correctly combined, can easily be fitted into any conveying installation.

The JEMA AGRO chain elevator is made in galvanised material, which makes it particularly suitable for outdoor applications. It is characterised by large capacity despite its small external dimensions and ensures effective utilisation of the overall height since the outlet is positioned very high. The T20/T40 chain elevator is designed for transportation of grain, granulates, and other bulk goods. A quality roller chain fitted with rubber carriers ensures that all material transport is conducted quietly, safely, and effectively. The chain elevator combine vertical and horizontal transport by using 90° bend. As regards capacity, the elevator is designed for lifting materials from a JEMA Dry Pit to storage or to a JEMA chain conveyor/belt conveyor.

#### Standard equipment:

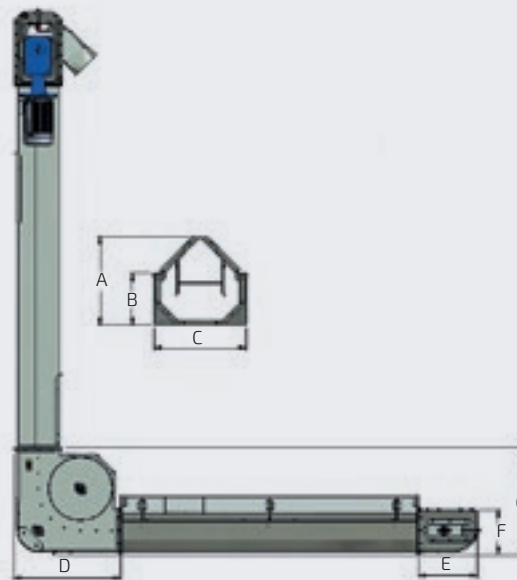
- Directly mounted gear motor
- Torque arm for shock absorption
- Outlet hopper 45°
- Bend 90°
- Inlet trough
- Tightening section
- Rubber carriers
- Extension 2,5 m with inspection cover
- Drive station with tensioner

#### Accessories:

- Motor with v-belt pulley
- Cover for geared motor
- Inlet for extension



# CHAIN ELEVATOR WITH BEND TYPE T20 / T40



Dimensions T20/T40:

	A	B	C	D	E	F	G
T20 / T44	375	230	355	720	430	300	720
T40 / T45	390	230	415	720	430	300	720

Technical specifications:

	T20	T40
Capacity based on 750 kg/m <sup>3</sup> (wheat) t/h	25 t/h	45 t/h
Capacity m <sup>3</sup> /h	33 m <sup>3</sup> /h	60 m <sup>3</sup> /h
Rotation speed	280 RPM	280 RPM
Chain speed	1,71 m/s	1,71 m/s
Pitch on chain	41,4 mm	41,4 mm
Tensile strength(Dynamic)	min. 17,8 kN	min. 17,8 kN
Carrier, material	Rubber	Rubber
Plate thickness, drive station	3 mm	3 mm
Plate thickness, extensions	1,5 mm	1,5 mm
Plate thickness, inlet trough	1,5 mm	1,5 mm
Plate thickness, elevator boot/ tightening section	3/1,5 mm	3/1,5 mm



# DISTRIBUTION AUGER TYPE T32



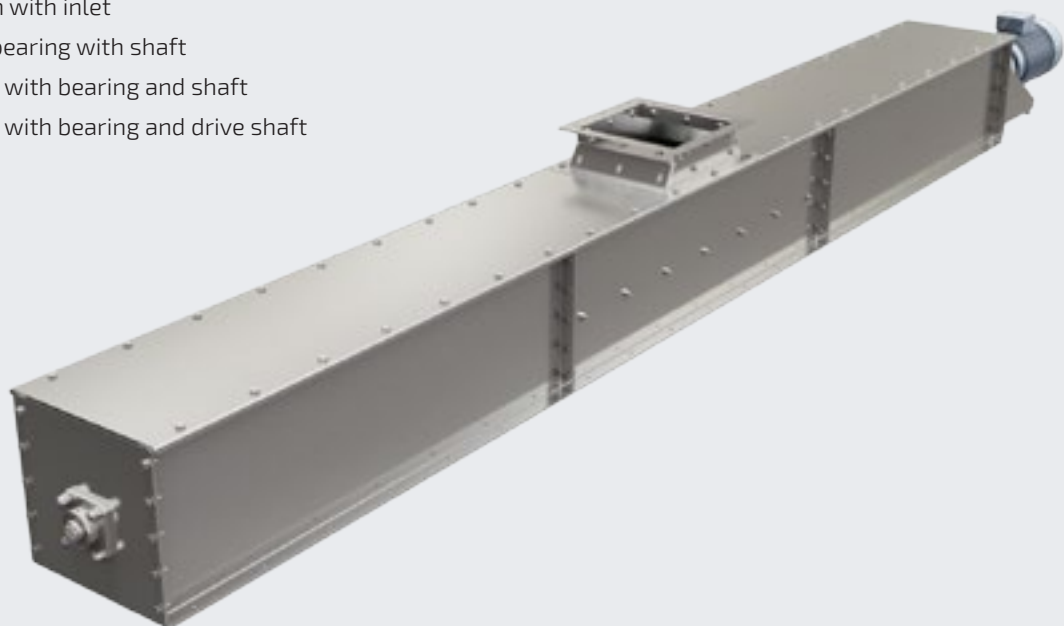
The JEMA AGRO leveling auger is consisting of standard elements that can be combined to fit any transport system.

The T32 distribution auger is made of galvanized steel, and is designed in an easily fitted modular system. It has a low noise level, and has in relation to its capacity a low power consumption. The T32 distribution auger is designed for transport of grain and other bulk material.

The distribution auger is designed for filling material in to indoor silos. The capacity of the distribution auger is adjusted so that the capacity corresponds with the capacity of a JEMA chain and flight conveyor.

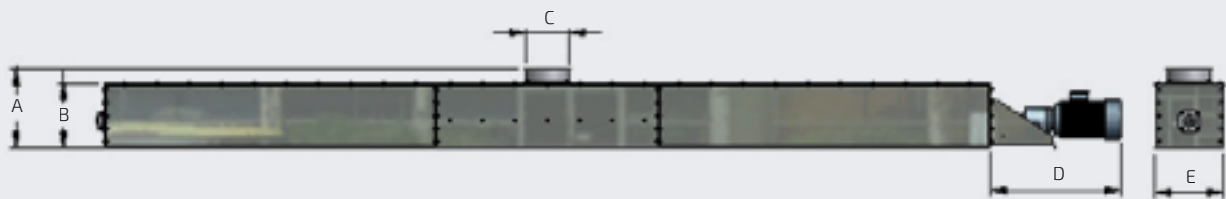
## Standard equipment:

- Foot geared motor
- Motor console
- Auger (right)
- Extension with inlet
- Support bearing with shaft
- End plate with bearing and shaft
- End plate with bearing and drive shaft





# DISTRIBUTION AUGER TYPE T32



## Dimensions T32:

	A	B	C	D	E
T32 45t/h	365	305	Ø200	610	330
T32 105 t/h	385	305	240 x 240	610	330

## Technical specifications:

	T32
Capacity by 750 kg/m <sup>3</sup> (wheat) t/h	45 / 105 t/h
Capacity m <sup>3</sup> /h	60 - 140 m <sup>3</sup> /h
Rotation speed	250 / 405 RPM
Diameter of the auger	Ø180
Distance between the auger threads	S160
Steel thickness, drive station	4 mm
Steel thickness, extension	2 mm

# DISTRIBUTION AUGER TYPE T37



The JEMA AGRO leveling auger is a simple solution for distribution of grain. It has a low noise level, and in relation to its capacity, it has a low power consumption.

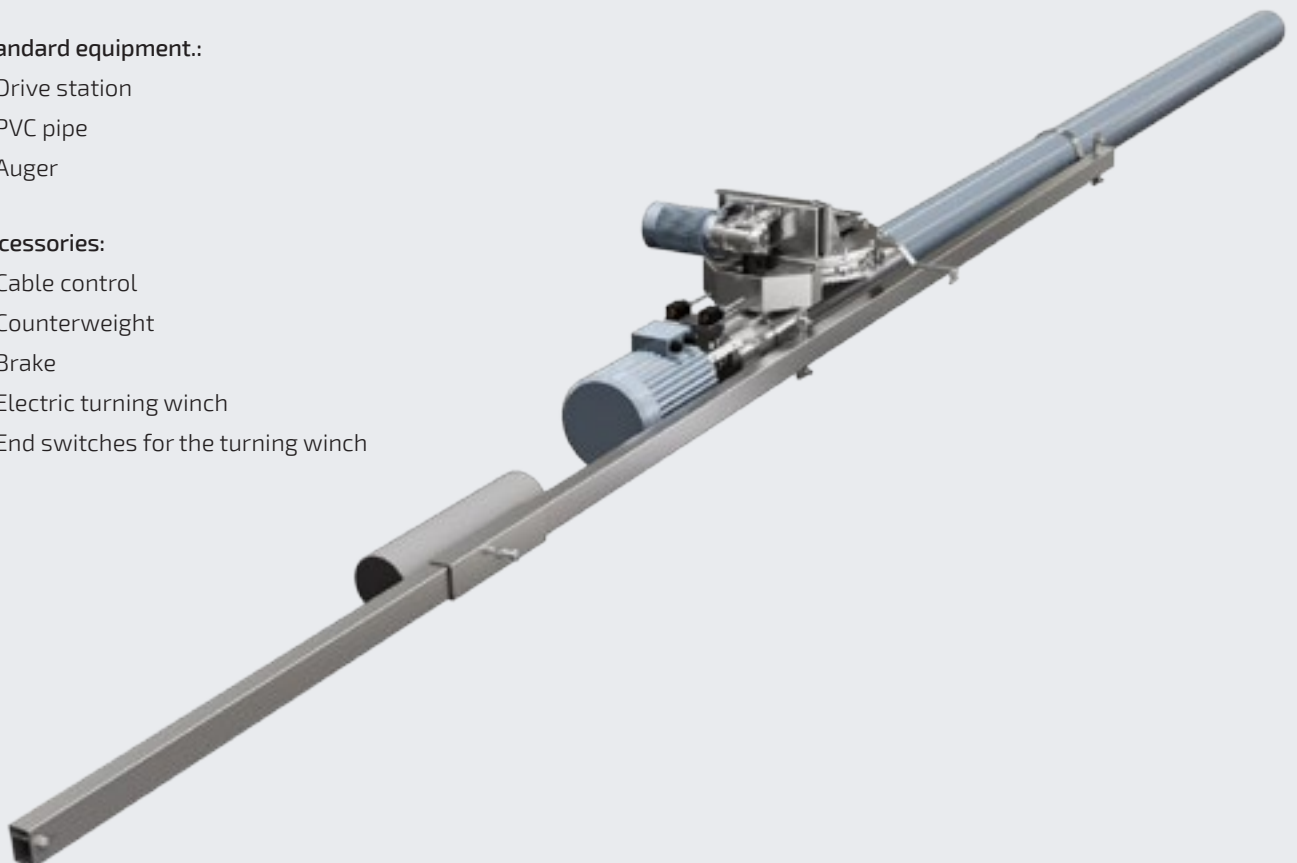
The T37 distribution auger is designed for transport of grain and other bulk material. The distribution auger can be used in spaces with limited height. It is fitted on the outlet of a JEMA T19V belt conveyor. From that position the auger can turn 300° and it can as such be used for filling indoor silos and bays. Furthermore the T37 distribution auger is handy for filling of flat floor storages. When fitted on a JEMA T19V belt conveyor, it can distribute grain evenly over the entire surface (within its reach). This can be done by equipping the distribution auger with a turning winch and electric control.

#### Standard equipment.:

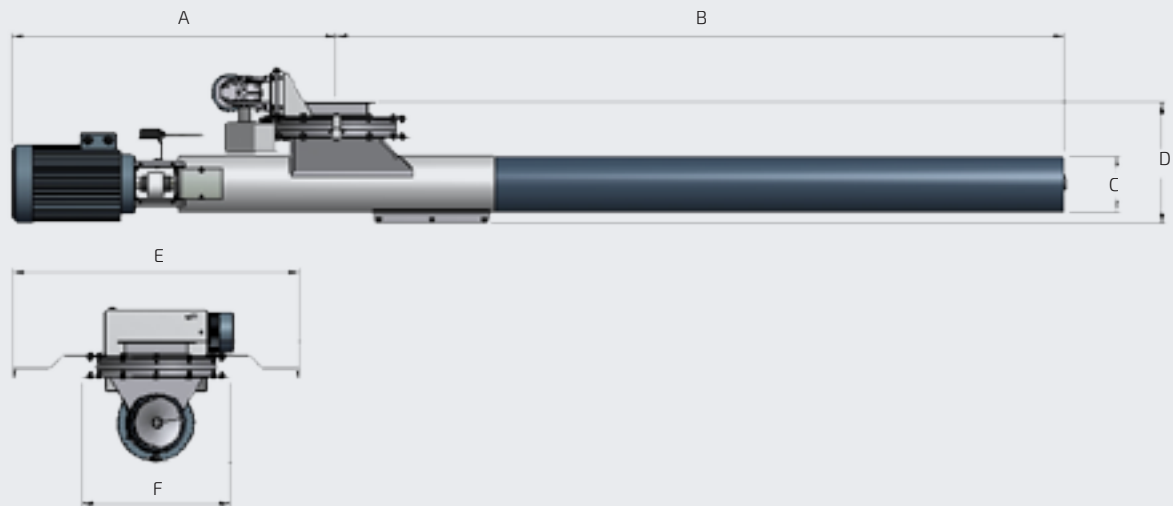
- Drive station
- PVC pipe
- Auger

#### Accessories:

- Cable control
- Counterweight
- Brake
- Electric turning winch
- End switches for the turning winch



# DISTRIBUTION AUGER TYPE T37



## Dimensions T37:

	A	B	C	D	E	F
T37	875	2000/3000/4000	Ø160	350	820	425

## Technical specifications:

	T37
Capacity by 750 kg/m <sup>3</sup> (wheat) t/h	45 t/h
Capacity m <sup>3</sup> /h	60 m <sup>3</sup> /h
Rotation speed	750 RPM
Diameter of the auger	Ø135
Distance between the auger threads	S125
Steel thickness, drive station	3-5 mm

# INTAKE CONVEYOR

## TYPE T44 / T45



Intake conveyor type T44/T45 is made up of standard elements which, when correctly combined, can easily be fitted into any conveying installation.

The JEMA AGRO intake conveyor is made in galvanised material, which makes it particularly suitable for outdoor applications. The intake conveyor is available in a horizontal design or with a 45° bend. It works effectively in both versions and has low power consumption in relation to its capacity.

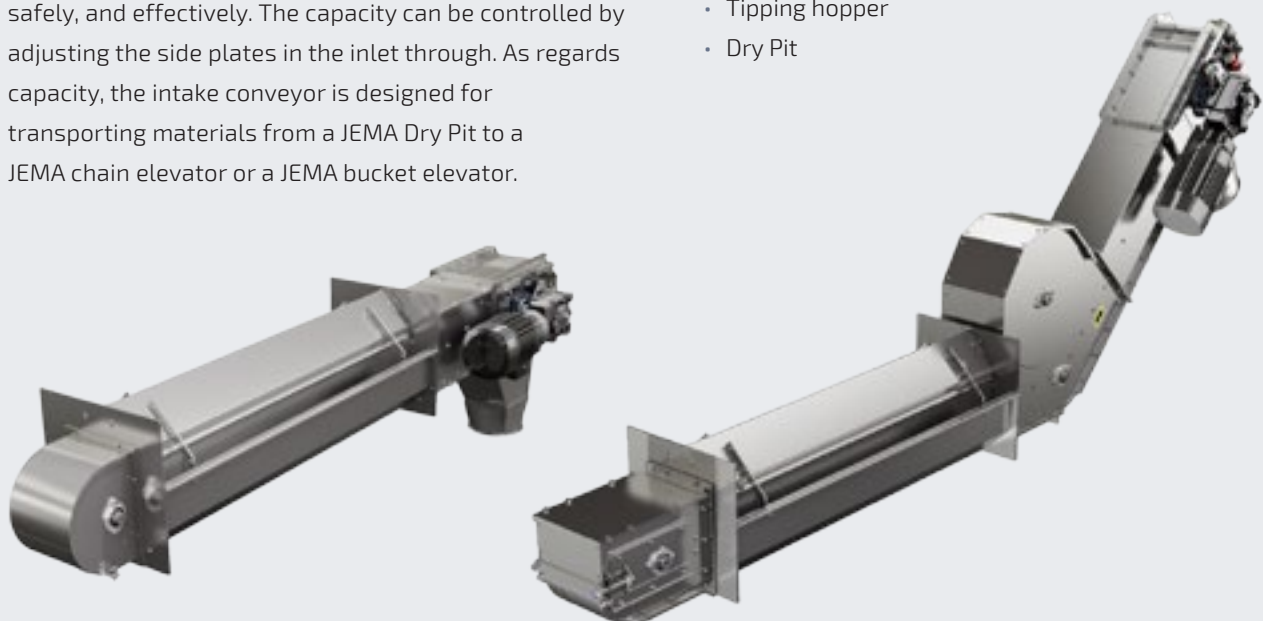
The T44/T45 intake conveyor is designed for industrial transport of grain, granulates, and other bulk goods. A quality roller chain fitted with rubber carriers ensures that all material transport is conducted quietly, safely, and effectively. The capacity can be controlled by adjusting the side plates in the inlet through. As regards capacity, the intake conveyor is designed for transporting materials from a JEMA Dry Pit to a JEMA chain elevator or a JEMA bucket elevator.

### Standard equipment:

- Directly mounted gear motor
- Torque arm for shock absorption
- Outlet hopper 90°
- Rubber carriers
- Elevator boot/ tightening section
- Drive station with tensioner
- Inspection cover in elevator boot/ tightening section
- Adjustable plates in the inlet troughs

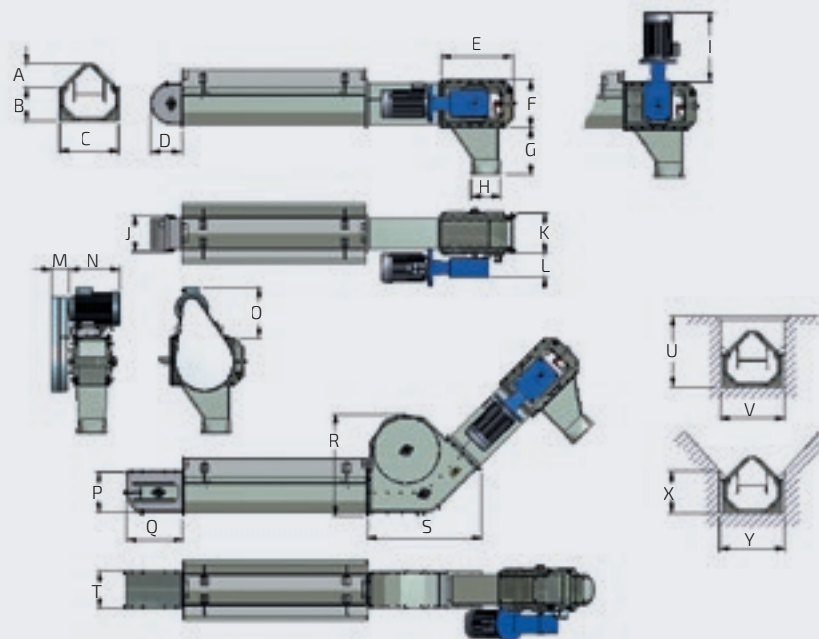
### Accessories:

- Motor with v-belt pulley
- Bend 45°
- Hopper with cover for 0,5 m inlet trough
- Cover for geared motor
- Tipping hopper
- Dry Pit





# INTAKE CONVEYOR TYPE T44 / T45



Dimensions T44/T45:

	A	B	C	D	E	F	G	H	I	J	K	L
T44	150	230	355	215	500	328	342	Ø200	580	189	226	210
T45	165	230	415	215	500	328	342	Ø200	580	249	286	210

	M	N	O	P	Q	R	S	T	U	V	X	Y
T44	100	420	405	300	430	690	775	192	430	400	300	400
T45	100	420	405	300	430	690	775	252	470	460	300	460

## Technical specifications:

	T44	T45
Capacity based on 750 kg/m <sup>3</sup> (wheat) t/h	30 t/h	60 t/h
Capacity m <sup>3</sup> /h	40 m <sup>3</sup> /h	80 m <sup>3</sup> /h
Rotation speed	180 RPM	180 RPM
Chain speed	1,1 m/s	1,1 m/s
Pitch on chain	41,4 mm	41,4 mm
Tensile strength(Dynamic)	min. 17,8 kN	min. 17,8 kN
Carrier, material	Rubber	Rubber
Plate thickness, drive station	3 mm	3 mm
Plate thickness, boot/ tightening section	3/1,5 mm	3/1,5 mm
Plate thickness, extension	1,5 mm	1,5 mm



# CHAIN CONVEYOR

## TYPE T44 / T45



Chain conveyor type T44/T45 is made up of standard elements which, when correctly combined, can easily be fitted into any conveying installation.

The JEMA AGRO chain conveyor is made in galvanised material, which makes it particularly suitable for outdoor applications. The chain conveyor T44/T45 is designed for industrial transport of grain, granulates, and other bulk goods. A quality roller chain fitted with rubber carriers ensures that all material transport is conducted quietly, safely, and effectively.

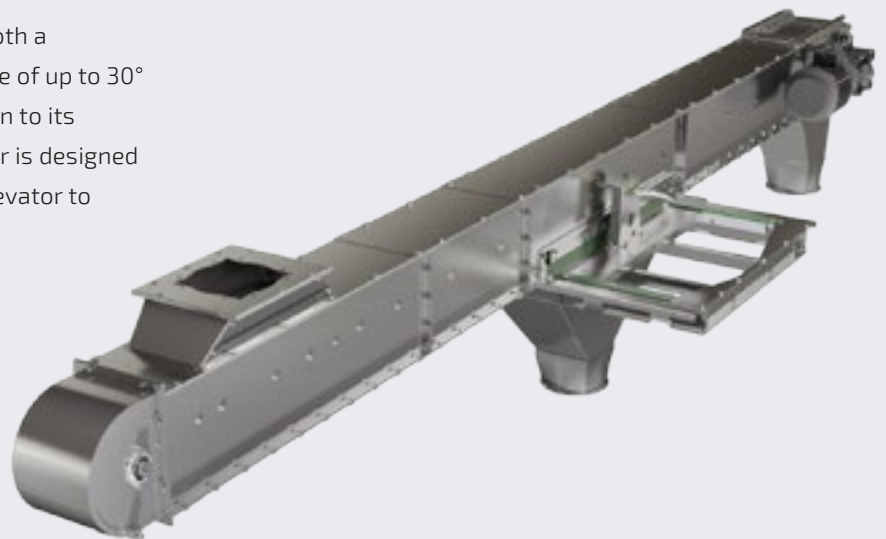
The chain conveyor works effectively in both a horizontal position and at an upward angle of up to 30° and has low power consumption in relation to its capacity. As regards capacity, the conveyor is designed for transporting materials from a JEMA elevator to storage or to a JEMA belt conveyor.

#### Standard equipment:

- Directly mounted gear motor
- Torque arm for shock absorption
- Outlet hopper 90°
- Rubber carriers
- Elevator boot/ tightening section
- Drive station with tensioner
- Inspection cover in elevator boot/ tightening section
- Inlet

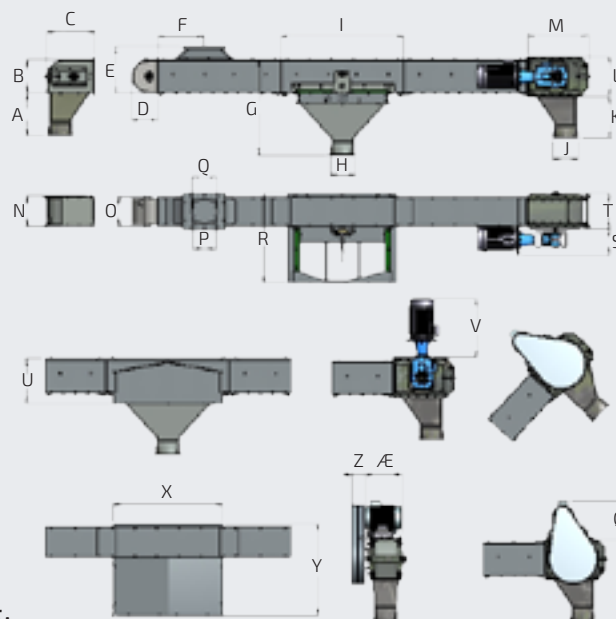
#### Accessories:

- Motor with v-belt pulley
- Intermediate outlet
- Cover for intermediate outlet
- Outlet hopper for intermediate outlet
- Shutter for drive station/ tightening section
- Cover for geared motor
- Wire suspension
- Speed control monitor
- PEHD 1000 bottom



# CHAIN CONVEYOR

## TYPE T44 / T45



Dimensions T44/T45:

	A	B	C	D	E	F	G	H	I	J	K	L	M	N
T44	342	300	430	215	380	378	780	Ø200	1000	Ø200	342	328	500	192
T45	342	300	430	215	380	378	780	Ø200	1000	Ø200	342	328	500	252

	O	P	Q	R	S	T	U	V	X	Y	Z	Æ	Ø
T44	189	180	Ø200	670	210	226	365	580	890	690	100	420	405
T45	249	180	Ø200	730	210	286	365	580	890	750	100	420	405

### Technical specifications:

	T44	T45
Capacity based on 750 kg/m³ (wheat) t/h	30 t/h	60 t/h
Capacity m³/h	40 m³/h	80 m³/h
Rotation speed	180 RPM	180 RPM
Chain speed	1,1 m/s	1,1 m/s
Pitch on chain	41,4 mm	41,4 mm
Tensile strength (Dynamic)	min. 17,8 kN	min. 17,8kN
Carrier, material	Rubber	Rubber
Plate thickness, drive station	3 mm	3 mm
Plate thickness, boot/ tightening section	3/1,5 mm	3/1,5 mm
Plate thickness extension	2/1,5 mm	2/1,5 mm



# INTAKE CONVEYOR

## TYPE T49 / T57



Intake conveyor type T49/T57 is made up of standard elements which, when correctly combined, can easily be fitted into any conveying installation.

The JEMA AGRO intake conveyor is made in strong galvanised material, which makes it particularly suitable for outdoor applications. The intake conveyor is available in a horizontal design or with a 30° bend. It works effectively in both versions and has low power consumption in relation to its capacity.

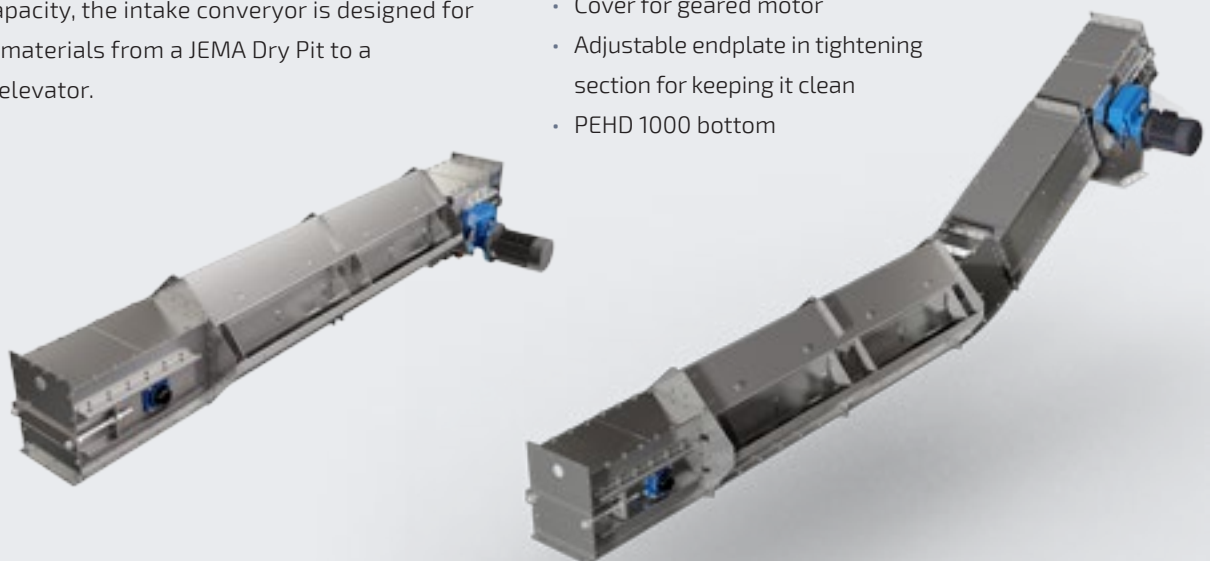
The intake conveyor T49/T57 is designed for industrial transport of grain, granulates, and other bulk goods. A steel chain fitted with synthetic carriers ensures that all material transport is conducted quietly, safely, and effectively. The capacity can be regulated steplessly from full capacity down to approx. 40% of capacity. As regards capacity, the intake conveyor is designed for transporting materials from a JEMA Dry Pit to a JEMA bucket elevator.

### Standard equipment:

- Directly mounted gear motor
- Torque arm for shock absorption
- Outlet hopper for drive station
- Plastic carriers will be delivered mounted from JEMA
- Tightening possibilities in both drive station and tightening section
- Inspection cover in drive station / tightening section
- Cleaning hatch in drive station/ tightening section
- Adjustable plates in the inlet troughs

### Accessories:

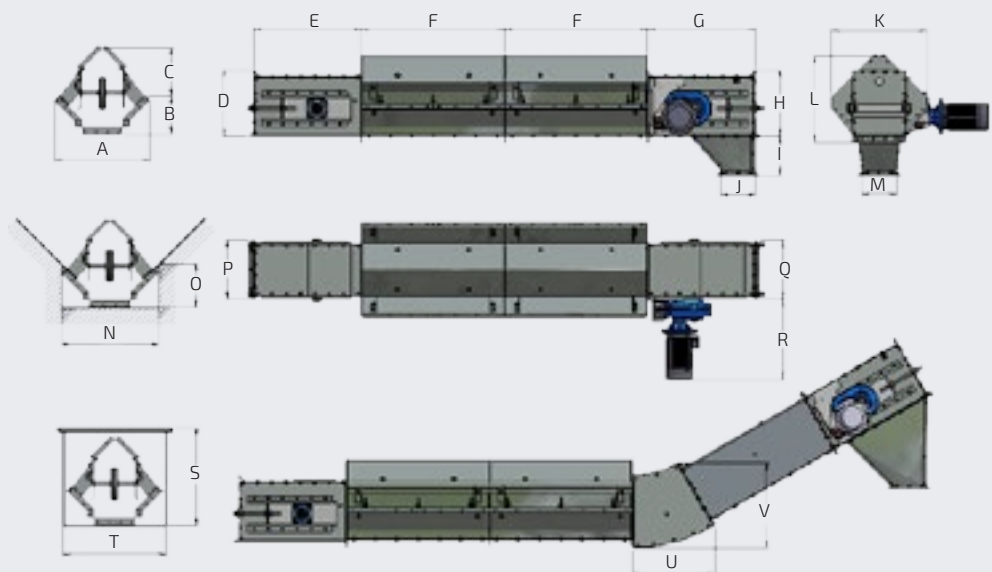
- Bend 30°
- Outlet hopper 30°
- Blockits sensor
- Tipping hopper
- Dry Pit
- Cover for geared motor
- Adjustable endplate in tightening section for keeping it clean
- PEHD 1000 bottom





# INTAKE CONVEYOR

## TYPE T49 / T57



Dimensions T49/T57:

	A	B	C	D	E	F	G	H	I	J	K	L	M	N
T49	670	260	340	464	753	1000	753	464	275	240	670	605	240	690
T57	780	260	340	464	753	1000	753	464	275	300	780	660	300	800

	O	P	Q	R 3,0 kW	R 4,0 kW	R 5,5 kW	R 7,5 kW	R 11 kW	R 15 kW	S	T	U	V
T49	310	400	414	550	585	620	650	730	780	680	690	580	595
T57	310	510	524	550	585	620	650	730	780	740	800	580	595

### Technical specifications:

	T49	T57
Capacity based on 750 kg/m <sup>3</sup> (wheat) t/h	105 t/h	150 t/h
Capacity m <sup>3</sup> /h	140 m <sup>3</sup> /h	200 m <sup>3</sup> /h
Rotation speed	45/60 RPM	45/60 RPM
Chain speed	0,79/0,99 m/s	0,79/0,99 m/s
Pitch on chain	125 mm	125 mm
Tensile strength	118 kN	118 kN
Carrier, material	PEHD 1000	PEHD 1000
Sprocket wheel, teeth	8 pcs	8 pcs
Plate thickness, drive station	3 mm	3 mm
Plate thickness, tightening section	3 mm	3 mm
Plate thickness, extension	3 mm	3 mm



# CHAIN CONVEYOR

## TYPE T49 / T57



Chain conveyor type T49/T57 is made up of standard elements which, when correctly combined, can easily be fitted into any conveying installation.

The JEMA AGRO chain conveyor is made in strong galvanised material, which makes it particularly suitable for outdoor applications. The chain conveyor T49/T57 is designed for industrial transport of grain, granulates, and other bulk goods. A steel chain fitted with synthetic carriers ensures that all material transport is conducted quietly, safely, and effectively.

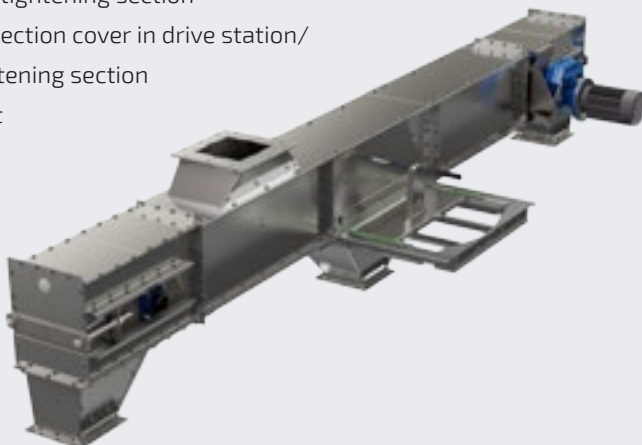
The chain conveyor works effectively in both a horizontal position and at an upward angle of up to 30° and has low power consumption in relation to its capacity. As regards capacity, the elevator is designed for transporting materials from a JEMA bucket elevator to storage or to a JEMA belt conveyor.

### Standard equipment:

- Directly mounted gear motor
- Torque arm for shock absorption
- Outlet hopper for drive station/ tightening section
- Plastic carriers will be delivered mounted from JEMA.
- Cleaning hatch in drive station/ tightening section
- Tightening possibilities in both drive station and tightening section
- Inspection cover in drive station/ tightening section
- Inlet

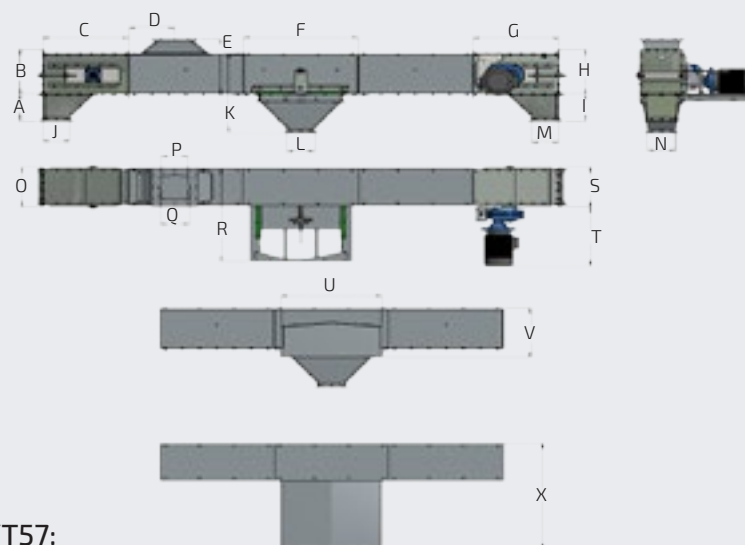
### Accessories:

- Intermediate outlet
- Outlet hopper for intermediate outlet
- Outlet hopper 30°
- Shutter for drive station/ tightening section
- Adjustable endplate in tightening section for keeping it clean
- Cover for geared motor
- Cover for intermediate outlet
- Wire suspension
- Blockits sensor
- PEHD 1000 bottom



# CHAIN CONVEYOR

## TYPE T49 / T57



Dimensions T49/T57:

	A	B	C	D	E	F	G	H	I	J	K	L	M	N
T49	275	464	753	400	570	1000	753	464	275	240	820	240	240	240
T57	275	464	753	425	570	1000	753	464	275	300	820	300	300	300

	O	P	Q	R	S	T 3,0 kW	T 4,0 kW	T 5,5 kW	T 7,5 kW	T 11 kW	T 15 kW	U	V	X
T49	414	240x240	Ø250	960	414	550	585	620	650	730	780	880	510	1095
T57	524	300x300	Ø300	1070	524	550	585	620	650	730	780	880	510	1205

### Technical specifications:

	T49	T57
Capacity based on 750 kg/m <sup>3</sup> (wheat) t/h	105 t/h	150 t/h
Capacity m <sup>3</sup> /h	140 m <sup>3</sup> /h	200 m <sup>3</sup> /h
Rotation speed	45/60 RPM	45/60 RPM
Chain speed	0,79/0,99 m/s	0,79/0,99 m/s
Pitch on chain	125 mm	125 mm
Tensile strength	118 kN	118 kN
Carrier, materials	PEHD 1000	PEHD 1000
Sprocket wheel, teeth	8 pcs	8 pcs
Plate thickness, drive station	3 mm	3 mm
Plate thickness, tightening section	3 mm	3 mm
Plate thickness, extension	3/1,5 mm	3/1,5 mm



# BELT CONVEYOR

## TYPE T50 / T51 / T52



Belt conveyor type T50/T51/T52 is made up of standard elements which, when correctly combined, can easily be fitted into any conveying installation.

The JEMA AGRO belt conveyor is manufactured in galvanised steel and designed in a light and easy-to-assemble modular system. All 3 types are constructed with rollers. They have a low noise level, and have in relation to their capacity a low power consumption.

The belt conveyor can transport materials in both directions. There is also a possibility for transport at an upward angle of up to 30° using carriers, however, with reduced capacity. The belt conveyor is designed for industrial purpose, and it is suitable for gentle transport of most materials.

### Standard equipment:

- Directly mounted gear motor
- Torque arm for shock absorption
- EP-belt
- Support rollers each 0,5 m
- Returning rollers each 2,0 m
- Shielding for drive station /tightening section
- Tightening in both drive station and tightening section

### Accessories:

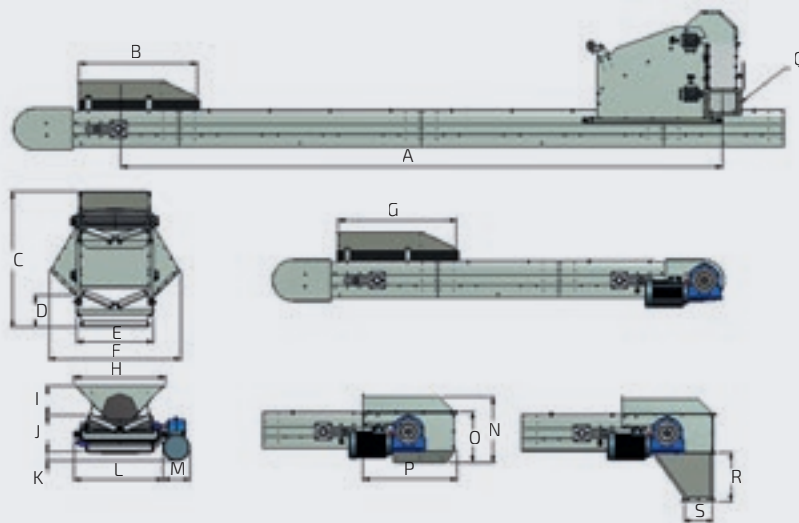
- Inlet hoppers
- Outlet skirts/outlet hoppers
- Cover for top/bottom
- Speed control monitor
- Moveable tripper carriage
- Drive winch for tripper carriage
- Belt with vulcanised v-carriers
- Runners for adjustable support fittings
- Belt guide rollers
- Belt scraper internal
- Belt scraper external
- Side extensions
- Oil resistant belt
- Outlet deviser





# BELT CONVEYOR

## TYPE T50 / T51 / T52



Dimensions T50/T51/T52:

	A	B	C	D	E	F	G	H	I
T50	Min. 5000	1000	955	320	535	1000	1000	650	215
T51	Min. 5000	1000	1150	300	635	1100	1000	750	215
T52	Min. 5000	1150	1225	300	785	1330	1150	900	215

	J	K	L	M	N	O	P	Q	R	S
T50	300	70	650	200	540	415	780	240 x 240	400	240 x 240
T51	300	70	750	200	540	415	780	240 x 240	400	240 x 240
T52	300	70	900	200	540	415	780	300 x 300	400	300 x 300

Technical specifications:

	T50	T51	T52
Capacity based on 750 kg/m <sup>3</sup> (wheat) t/h	60 t/h	105 t/h	150 t/h
Capacity m <sup>3</sup> /h	80 m <sup>3</sup> /h	140 m <sup>3</sup> /h	200 m <sup>3</sup> /h
Rotation speed	150 RPM	150 RPM	150 RPM
Belt speed	2,3 m/s	2,3 m/s	2,3 m/s
Drum diameter	Ø300 mm	Ø300 mm	Ø300 mm
Belt width	400 mm	500 mm	650 mm
Belt type	EP250/2	EP250/2	EP250/2
Plate thickness, drive station/ tightening section	2/3 mm	2/3 mm	2/3 mm
Plate thickness, extension	2/3 mm	2/3 mm	2/3 mm



# BUCKET ELEVATOR

## TYPE T53 / T54 / T55



Bucket elevator type T53/T54/T55 is made up of standard elements which, when correctly combined, can easily be fitted into any conveying installation.

The JEMA AGRO bucket elevator is made in galvanised steel, which makes it particularly suitable for outdoor applications. All three types work efficiently and have low power consumption in relation to their capacity. We have designed them to be stable in tall versions and to be capable of running continuously for many hours. The bucket elevator is designed for industrial transport of grain, granulates, and other bulk goods. As regards capacity, the elevator is designed for lifting materials from a JEMA intake conveyor to a JEMA chain conveyor. The upward and downward side of the bucket elevator can be fed with the same capacity.

### Standard equipment:

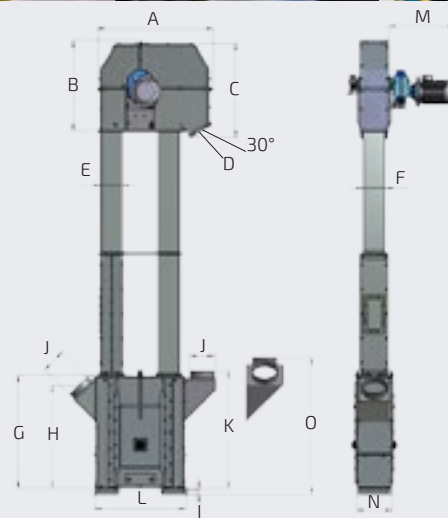
- Directly mounted gear motor
- Torque arm for shock absorption
- Wear plate in elevator head
- Removable elevator top
- Self cleaning drive/ tightening drum
- Tightening function in elevator boot
- Cleaning hatch in elevator boot
- Elevator feet
- Inlet piece 90°
- Elevator extension with inspection cover and sight glass
- Back stop
- Speed control monitor
- Antistatic belt with steel bucket
- Anti-return flow

### Accessories:

- Cover for geared motor
- Inlet piece 45° and 3-way inlet
- 2-way switch 45°/90°, transition pieces and pipe
- Inlet shutter
- Aspiration socket
- Misalignment sensor
- Explosion outlet
- Oil resistant belt
- Extra feet
- Service platform, ladder, and resting platform



# BUCKET ELEVATOR TYPE T53 / T54 / T55



Dimensions T53/T54/T55:

	A	B	C	D	E	F	G	H	I	J
T53	960	740	800	180x180	180	180	920	850	50	Ø200
T54	1292	1041	1086	240x240	240	240	1150	1062	56	Ø250
T55	1292	1041	1086	300x300	240	300	1150	1062	56	Ø300

	K	L	M 2,2 kW	M 3 kW	M 4 kW	M 5,5 kW	M 7,5 kW	M 11 kW	M 15 kW	N	O
T53	980	740	500	555	595	635				290	1124
T54	1210	1090		625	675	715	790	835		384	1485
T55	1210	1090		625	675	715	790	835	955	440	1539

Technical specifications:

	T53	T54	T55
Capacity based on 750 kg/m <sup>3</sup> (wheat) t/h	30/60 t/h	105 t/h	150 t/h
Capacity m <sup>3</sup> /h	40/80 m <sup>3</sup> /h	140 m <sup>3</sup> /h	200 m <sup>3</sup> /h
Rotation speed/ belt speed	223/3,5 RPM	142/3,7 RPM	142/3,7 RPM
Drum diameter	Ø300 mm	Ø500 mm	Ø500 mm
Bucket/m. belt	6/10 pcs.	8,5 pcs.	7 pcs.
Bucket volume, horizontal/max	0,5/0,68 L	0,9/1,29 L	2,4/3,08 L
Material thickness, buckets	1,5 mm	1,5 mm	2,0 mm
Belt width	150 mm	200 mm	280 mm
Belt type/standard	EP500/4	EP500/4	EP500/4
Plate thickness, head/boot	2,0 mm	3,0 mm	3,0 mm
Plate thickness, extension	1,5 mm	1,5 mm	2,0 mm



# LEVELING AUGER

## TYP T56



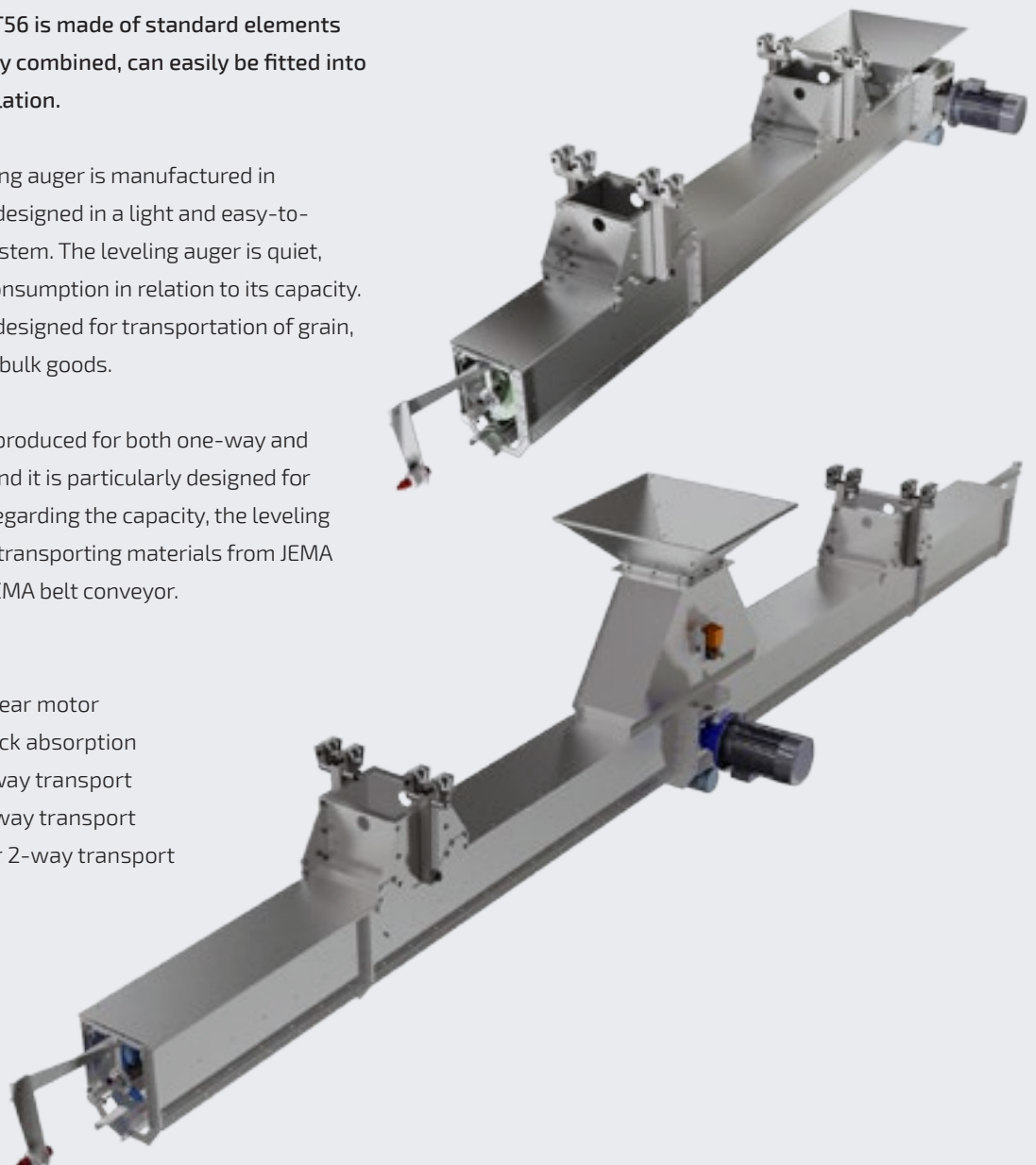
Leveling auger type T56 is made of standard elements which, when correctly combined, can easily be fitted into any conveying installation.

The JEMA AGRO leveling auger is manufactured in galvanized steel and designed in a light and easy-to-assemble modular system. The leveling auger is quiet, and has low power consumption in relation to its capacity. The leveling auger is designed for transportation of grain, granulates and other bulk goods.

The leveling auger is produced for both one-way and two-way transport, and it is particularly designed for filling of flat floors. Regarding the capacity, the leveling auger is designed for transporting materials from JEMA chain conveyor or a JEMA belt conveyor.

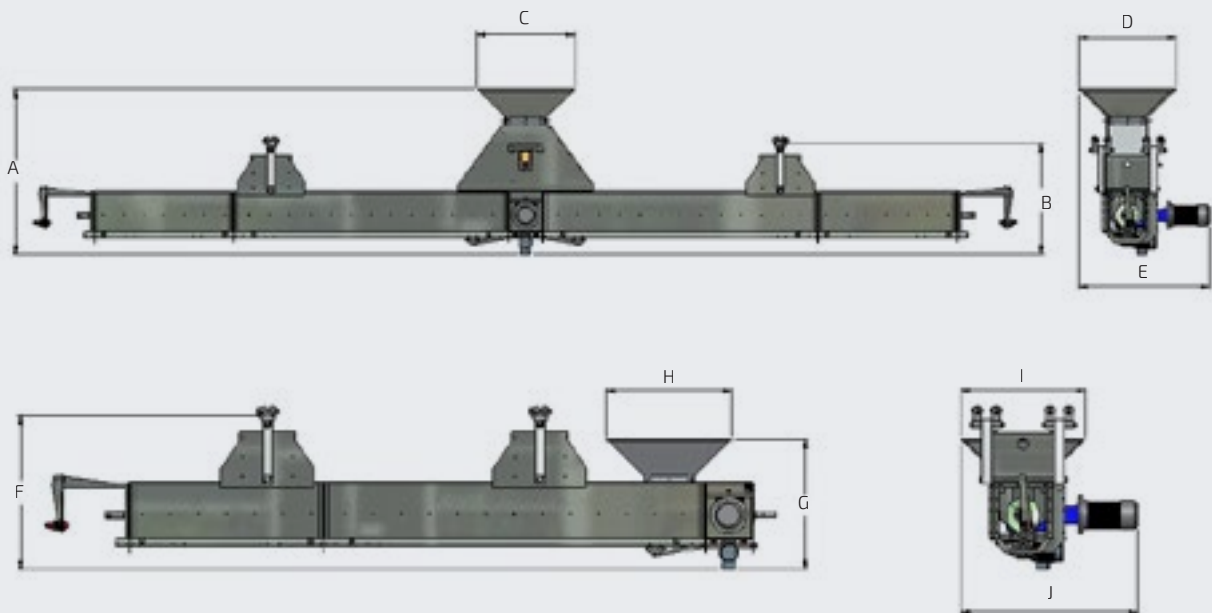
### Standard equipment:

- Directly mounted gear motor
- Torque arm for shock absorption
- Inlet hopper for 1-way transport
- Inlet hopper for 2-way transport
- Distribution box for 2-way transport
- Auger right/left
- Blockits sensor
- Travelling crabs





# LEVELING AUGER TYP T56



## Dimensions T56:

	A	B	C	D	E	F	G	H	I	J
T56	1230	820	730	730	1100	820	700	670	670	1050

## Technical specifications:

	T56
Capacity based on 750 kg/m <sup>3</sup> (Wheat) t/h	45-150 t/h
Capacity m <sup>3</sup> /h	60-200 m <sup>3</sup> /h
Rotation speed	180/280/440 RPM
Diameter, auger	Ø180
Screw blading distance, auger	S160
Plate thickness, drive station	3 mm
Plate thickness, extension	2 mm



# EXPERIENCE BUILDS

## BRIDGE TO THE FUTURE



**JEMA**

ENGINEERING → GRAIN HANDLING → TOGETHER

[www.jema.as](http://www.jema.as)

Kløservejen 2, Sahl  
8850 Bjerringbro  
Denmark  
T: +45 8668 1655  
[jema@jema.as](mailto:jema@jema.as)